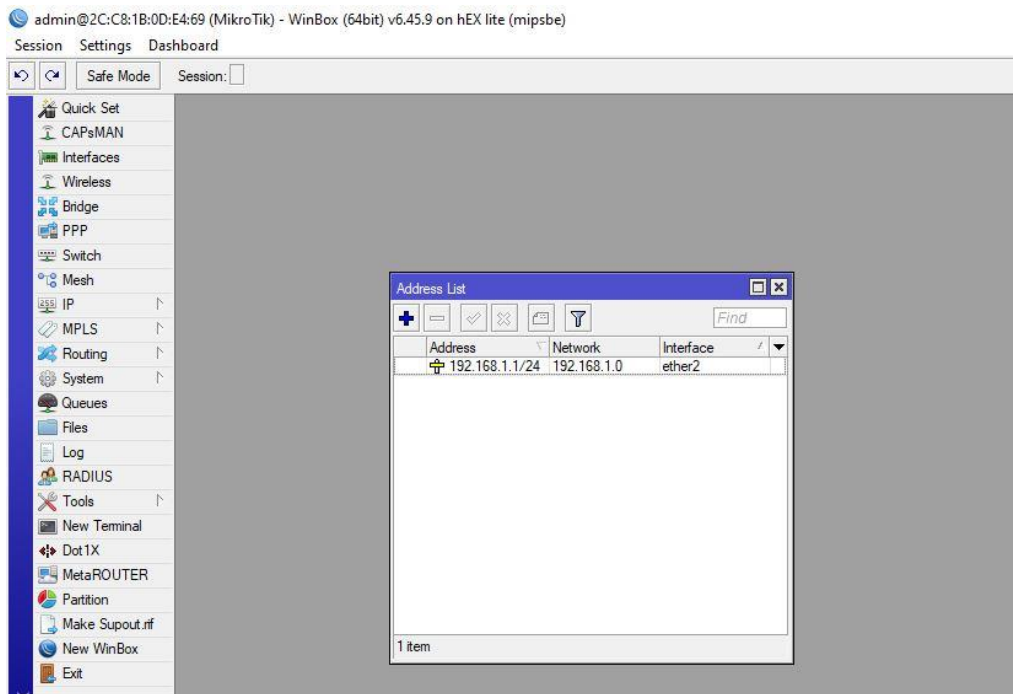
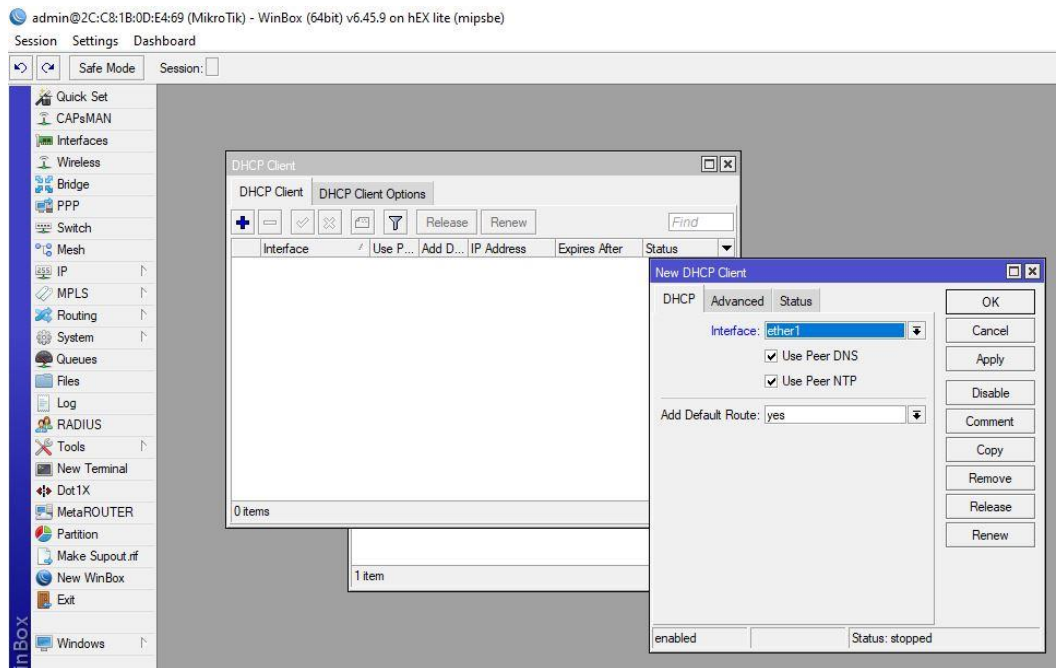


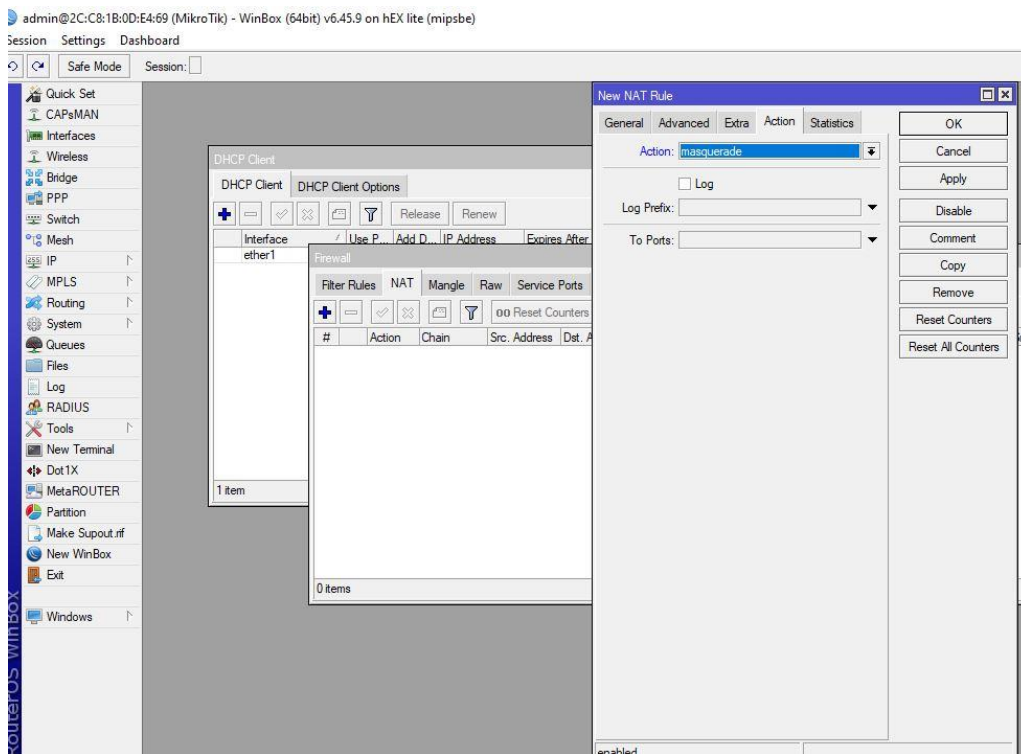
- Memasuki IP address



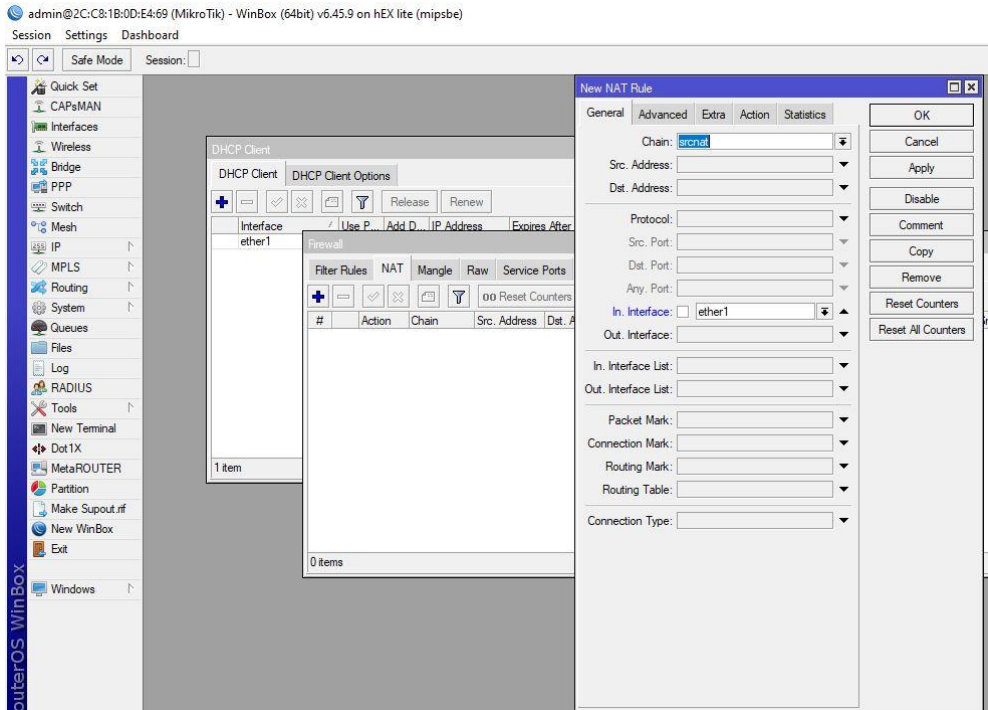
- Isi IP Address dengan hasil yang dicontohkan



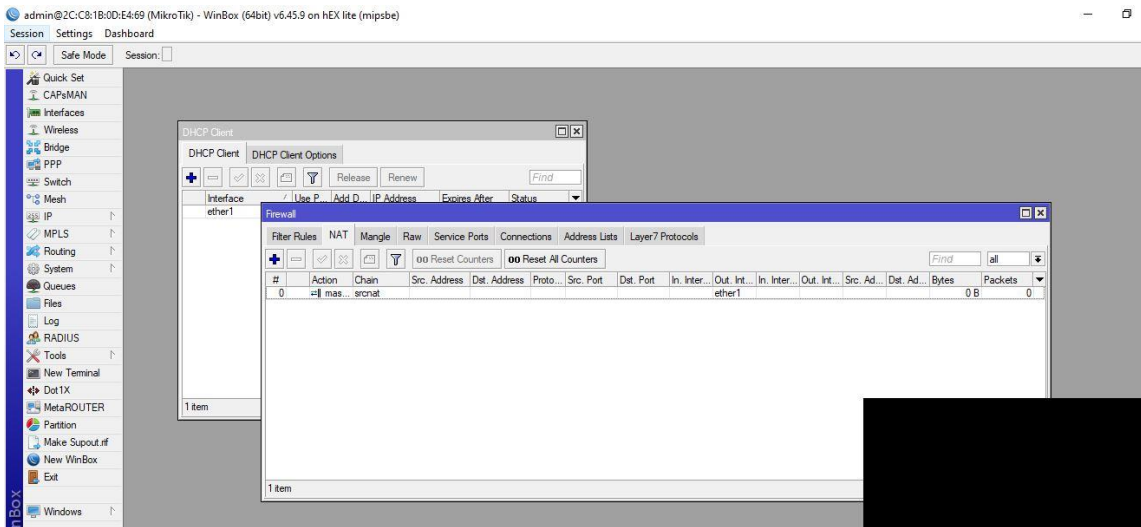
- Isi client sama seperti di contoh



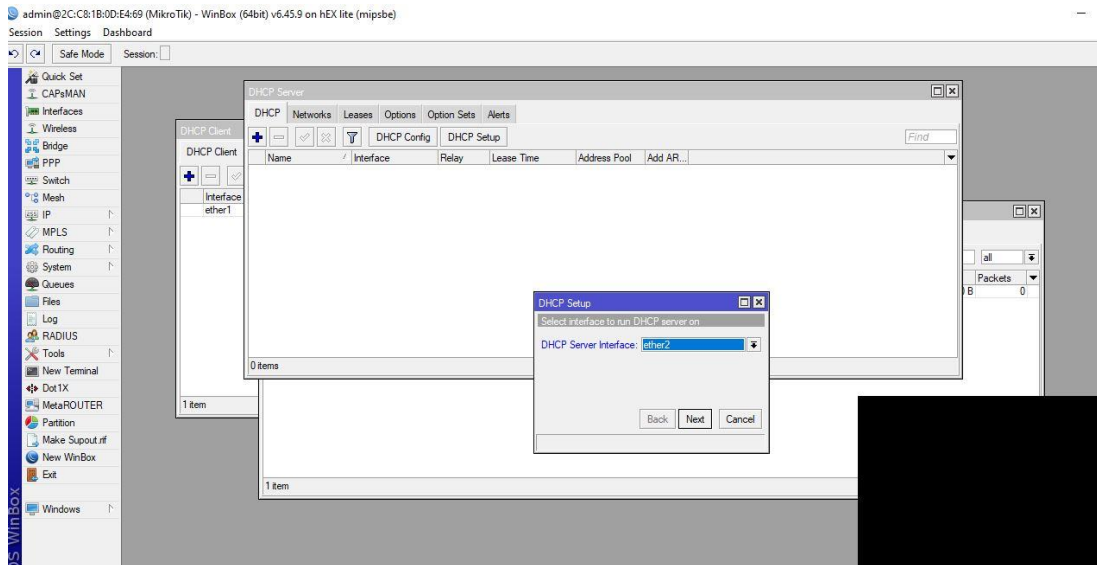
- Pergi ke firewall lalu isi actionnya dengan (masquarade)



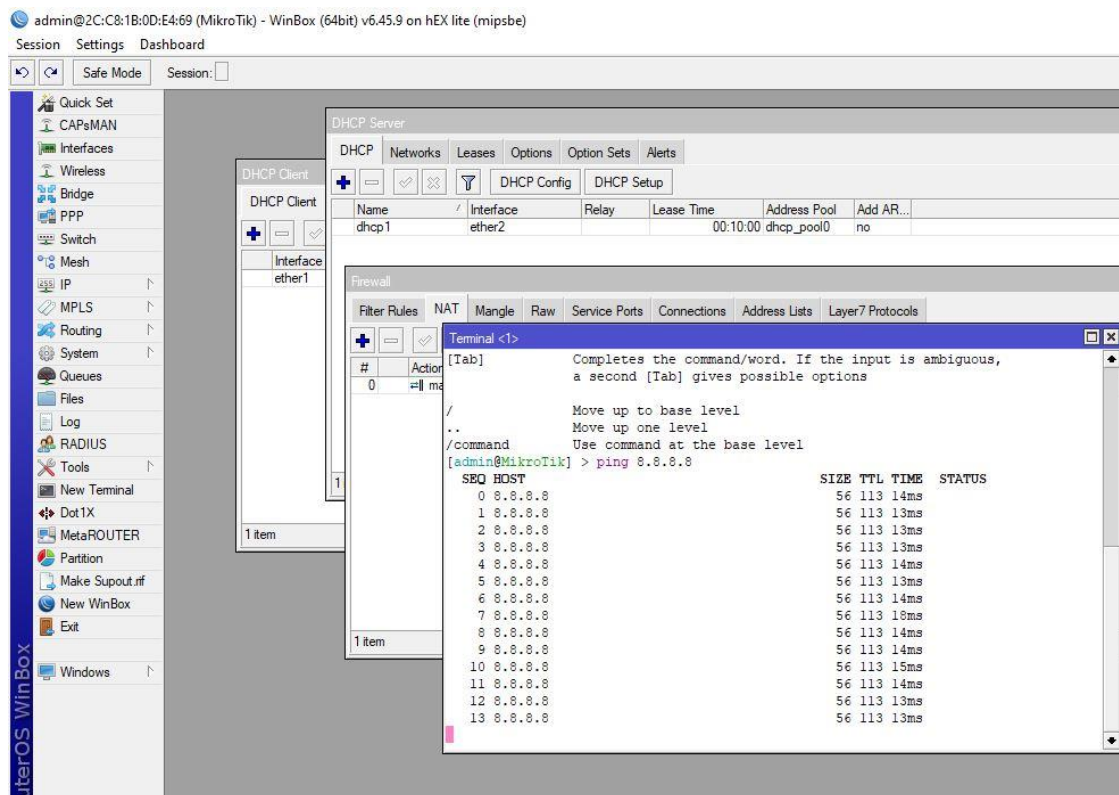
- Lalu pergi ke general isi chain dengan(srcnat)



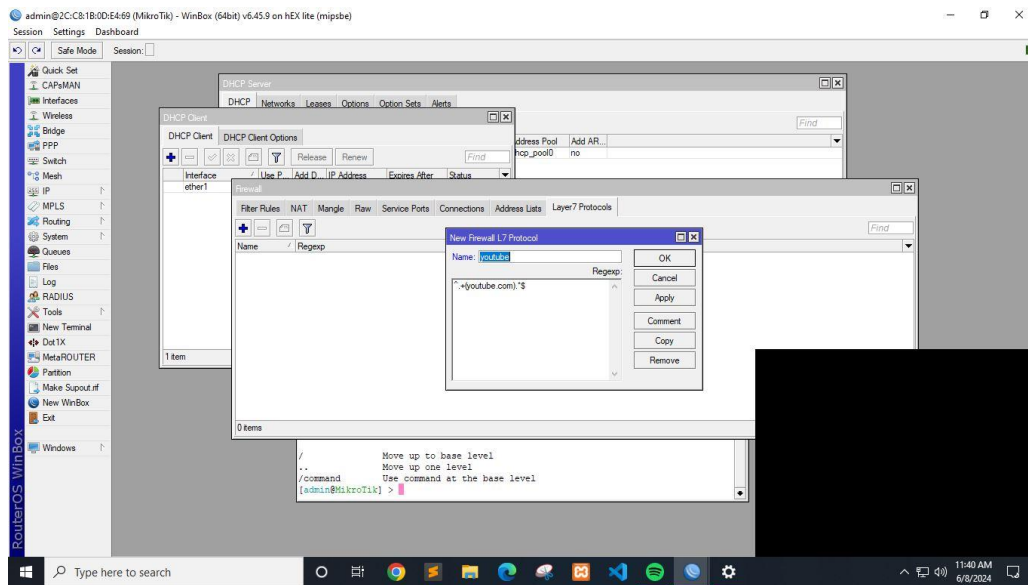
- Hasil dari firewall



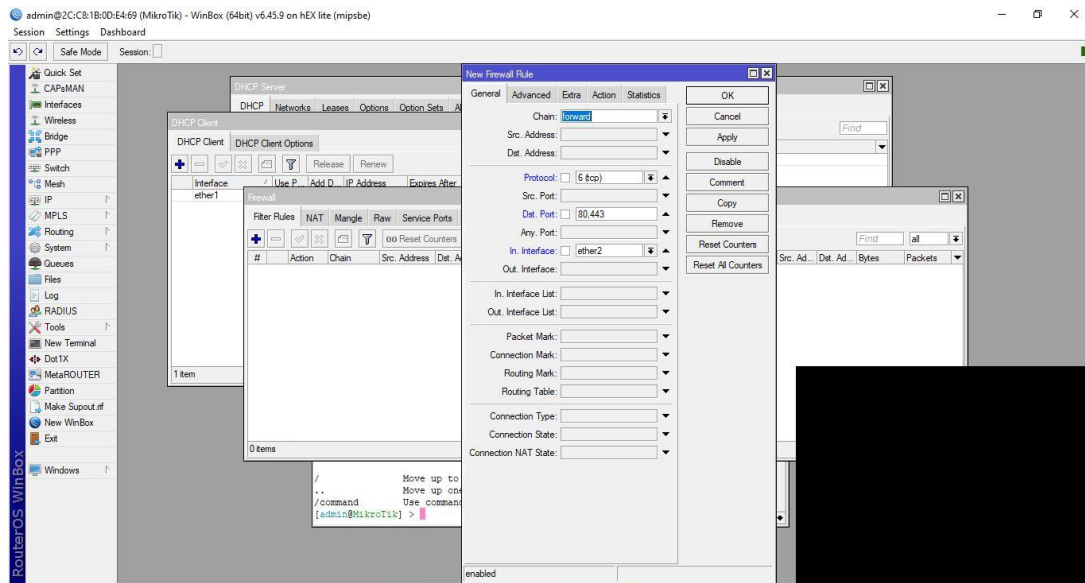
- Lalu pergi ke dhcp server lalu pilih (ether2) lalu next next sampai selesai



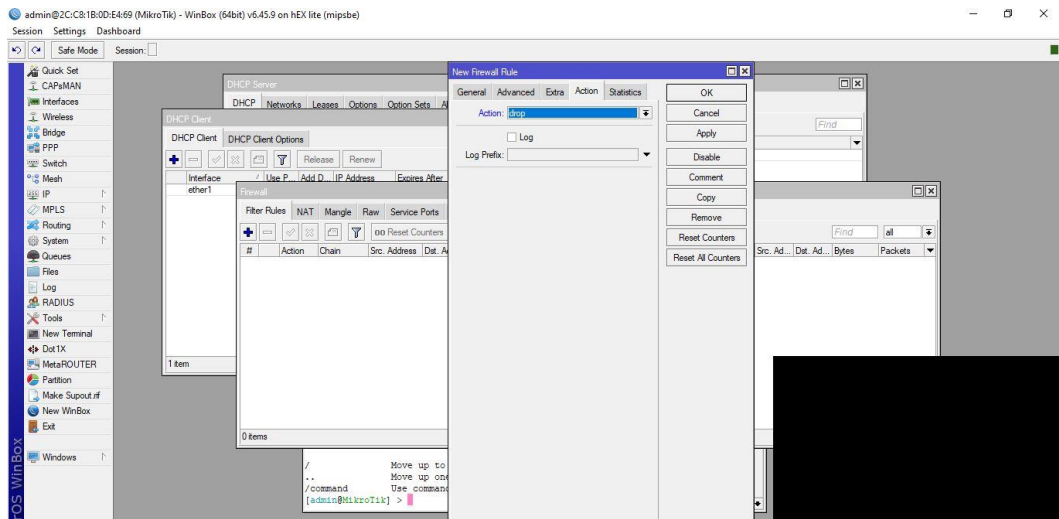
- Pergi ke terminal lalu cek hasilnya dengan ping 8.8.8.8



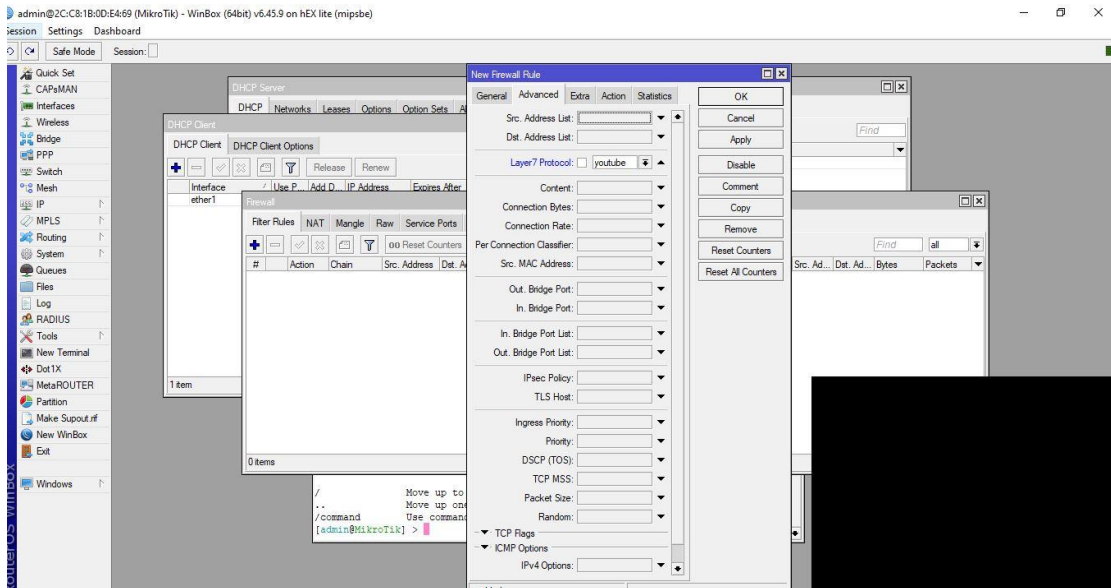
- Memblokir situs
- Langkah Pertama pergi Ke firewall lalu isi name(youtube)
- Lalu isi regexp (^+(youtube.com).*\$)
- Lalu ke coment isi dengan nama block youtube



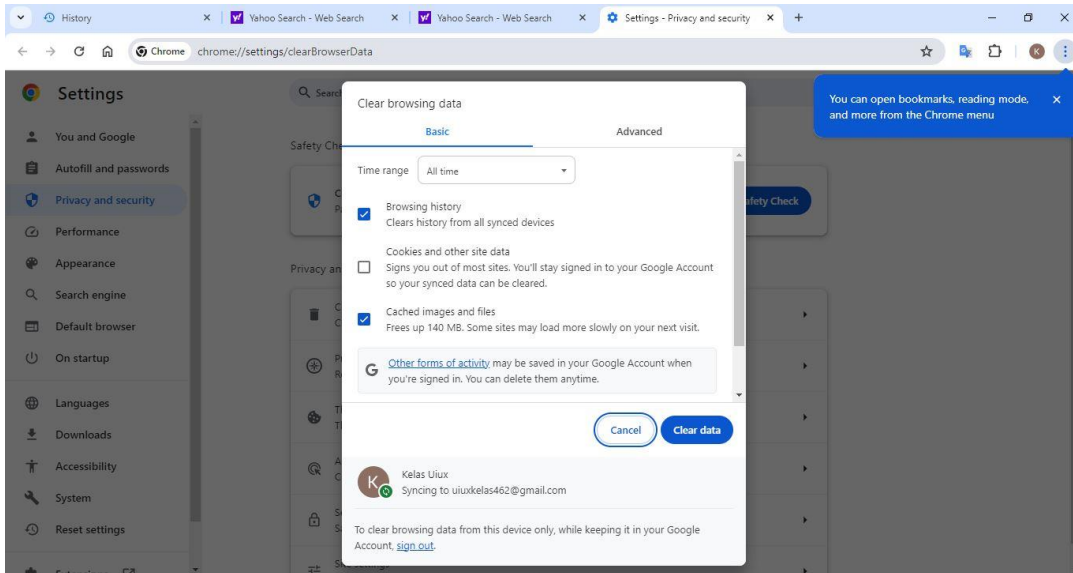
- Lalu pergi ke filter rules lalu isi chain(forward)
- Protocol(6 tcp disini protocol otomatis ke isi)
- Dst port isi(80,443)
- In interface isi(ether2)



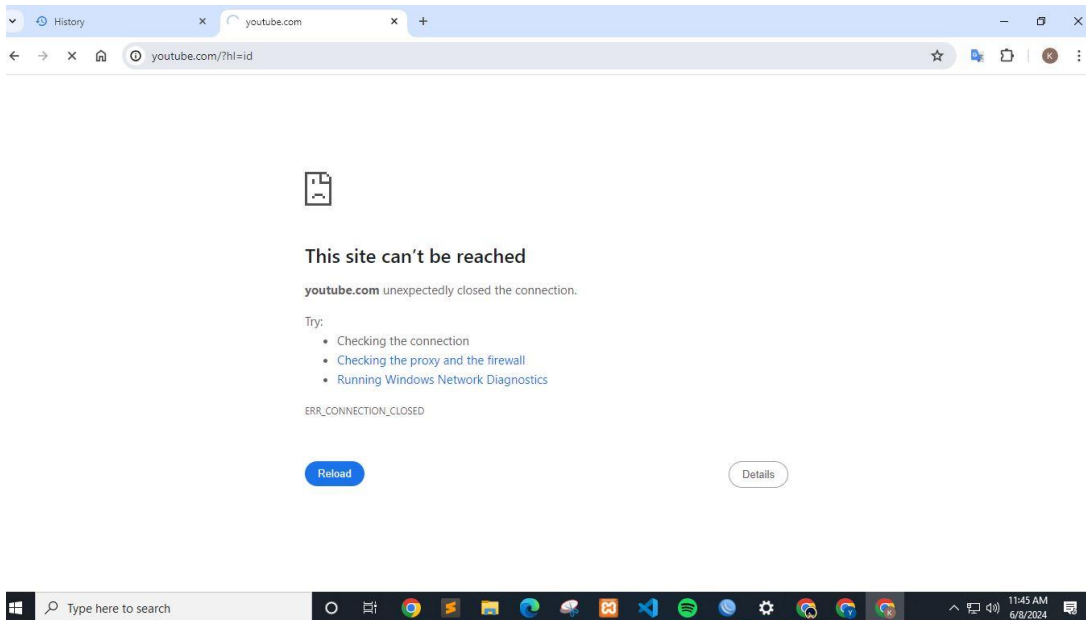
- Action drop



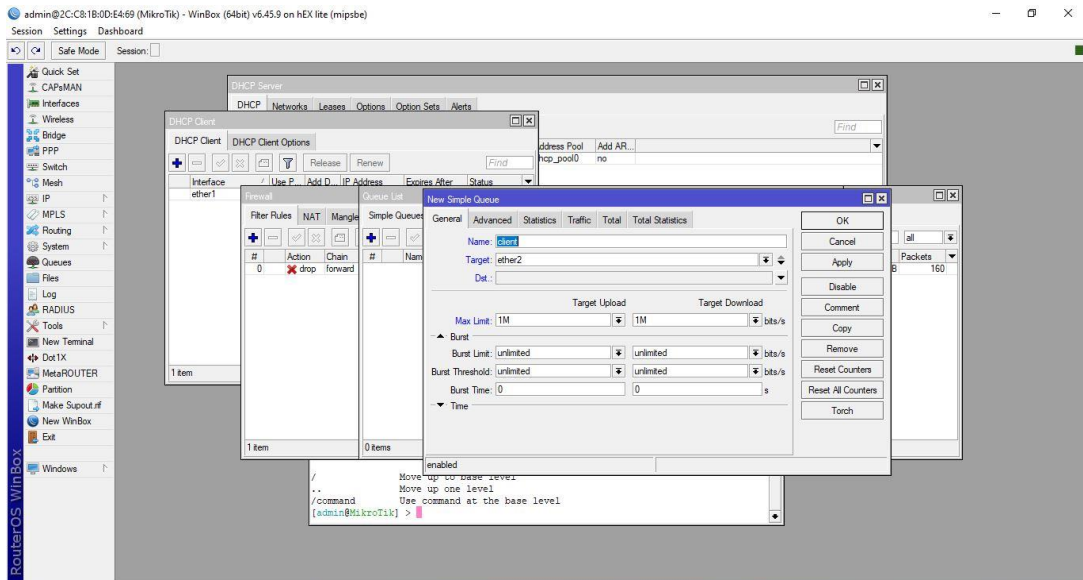
- Pergi ke advanced layer 7 protocols (youtube)



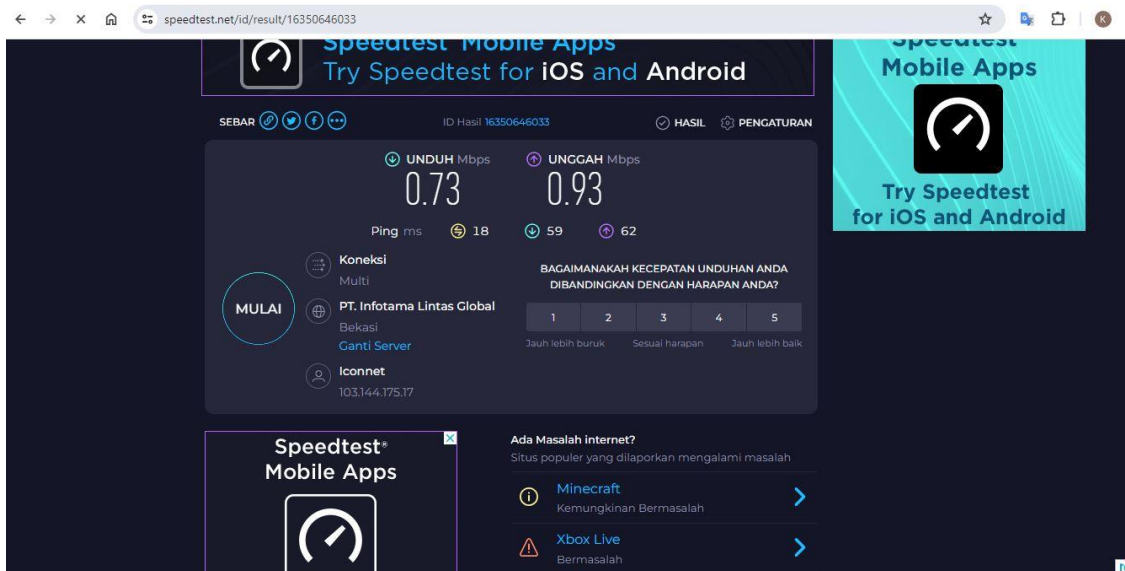
- Lalu pergi ke chorme hapus data penjalahan



- Hasil blockir situs



- Bandwidth isi name(client)
- Targetnya (ether2)
- Target upload (sesuai kalian)
- Target Download(sesuai kalian)



- Hasil bandwidth